

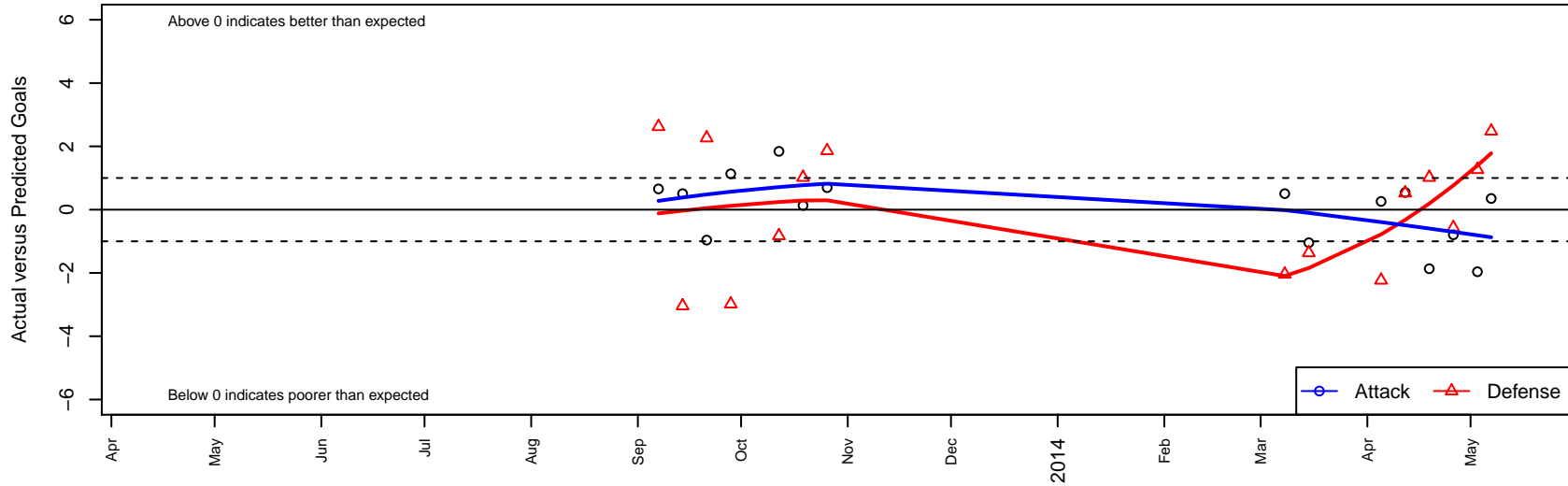
FC Boise Cardinal B02

Boise, ID
 B02 total strength=196
 attack=0.21 defense=0.07
 fall league = Idaho D3 Bracket B U11, Spr Idah
 alt names used:
 FC BOISE CARDINAL

Venues played:
 Idaho D3 Bracket B U11
 Spr Idaho D3 West U11



FC Boise Cardinal B02
 Dots are actual minus expected GF (blue circles) and GA (red triangles).
 Blue line is smoothed change in attack strength. Red is smoothed change in defense strength.



	date	home		away		venue	pred.home	pred.away
27112	2014-05-07	FC Boise Cardinal B02	2	Boise Nationals Bayern White B02	4	Spr Idaho D3 West U11	1.65	6.5
27058	2014-05-03	FC Boise Cardinal B02	0	Idaho Rush Blue B02	2	Spr Idaho D3 West U11	1.96	3.3
26700	2014-04-26	FC Boise Cardinal B02	3	Sawtooth United White B02	5	Spr Idaho D3 West U11	3.79	4.4
26548	2014-04-19	FC Nova White B02	5	FC Boise Cardinal B02	0	Spr Idaho D3 West U11	6.02	1.9
25999	2014-04-12	Sawtooth United Blue B02	3	FC Boise Cardinal B02	3	Spr Idaho D3 West U11	3.53	2.5
25599	2014-04-05	Idaho Arsenal United White B02	7	FC Boise Cardinal B02	2	Spr Idaho D3 West U11	4.77	1.7
24542	2014-03-15	Idaho Storm B02	7	FC Boise Cardinal B02	1	Spr Idaho D3 West U11	5.64	2.0
23843	2014-03-08	FC Boise Cardinal B02	2	Idaho Rush Black B02	7	Spr Idaho D3 West U11	1.49	5.0
15673	2013-10-26	FC Boise Cardinal B02	4	Sawtooth United B02	4	Idaho D3 Bracket B U11	3.30	5.9
14722	2013-10-19	FC Boise Cardinal B02	2	FC Nova White B02	5	Idaho D3 Bracket B U11	1.87	6.0
13669	2013-10-12	McCall Avalanche B02	1	FC Boise Cardinal B02	6	Idaho D3 Bracket B U11	0.17	4.2
11738	2013-09-28	FC Boise Cardinal B02	3	FC Nova White B02	9	Idaho D3 Bracket B U11	1.87	6.0
10756	2013-09-21	Idaho Rush Blue B02	1	FC Boise Cardinal B02	1	Idaho D3 Bracket B U11	3.26	2.0
9781	2013-09-14	FC Boise Cardinal B02	2	Idaho Rush Black B02	8	Idaho D3 Bracket B U11	1.49	5.0
8840	2013-09-07	Idaho Inferno B02	1	FC Boise Cardinal B02	3	Idaho D3 Bracket B U11	3.62	2.3